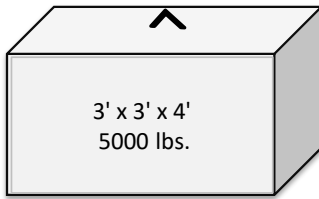


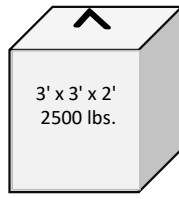
# GRAVES CONCRETE

Blocks are made with returned concrete



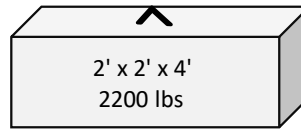
3' x 3' x 4'  
5000 lbs.

\$50.00



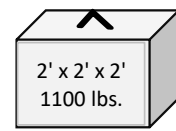
3' x 3' x 2'  
2500 lbs.

\$40.00



2' x 2' x 4'  
2200 lbs

\$45.00

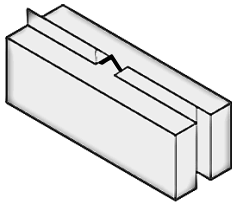


2' x 2' x 2'  
1100 lbs.

\$40.00

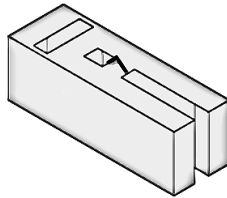
## UnFaced V-Groove Blocks

Blocks are made with returned concrete



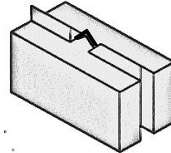
2' x 2' x 6'  
3150 lb.

\$60.00



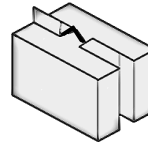
2' x 2' x 5'  
2600 lbs.

\$60.00



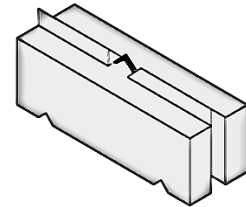
2' x 2' x 4'  
2100 lbs.

\$55.00



2' x 2' x 2'  
2' x 2' x 3'  
1570 lbs.

\$40.00 & 50.00

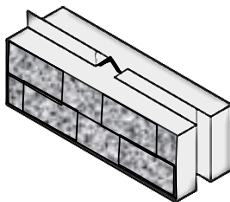


2' x 2' x 6' corner  
3140 lbs.

\$70.00

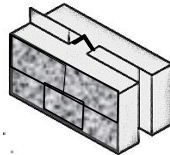
## Faced V-Groove Blocks

Blocks are made with returned concrete



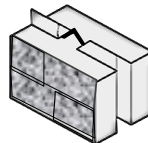
2' x 2' x 6'  
3150 lb.

\$70.00



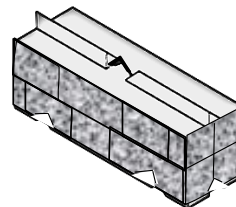
2' x 2' x 4'  
2100 lbs.

\$65.00



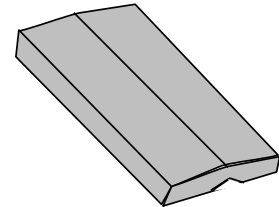
2' x 2' x 2'  
2' x 2' x 3'  
1570 lbs.

\$50.00 & \$60.00



2' x 2' x 6' corner  
3140 lbs.

\$80.00



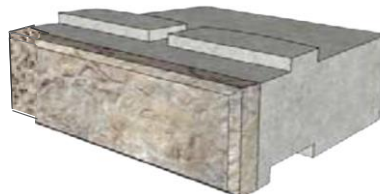
26" x 6" x 6' Cap  
1050 lbs.

\$90.00  
4000 psi



Retaining Wall Blocks  
16" high x 48" long

Made with 4000psi  
Concrete



24" Deep Block \$90.00  
39" Deep Block \$100.00  
45" Deep Block \$110.00  
60" Deep Block \$120.00  
72" Deep Block \$130.00

Top Block \$85.00  
Corner Block \$90.00  
Half Blocks \$80.00  
Cap Stone \$80.00  
Step \$80.00

Graves Concrete  
P.O. Box 680 E. Templeton, MA.01438 978-939-5712 ext. 3