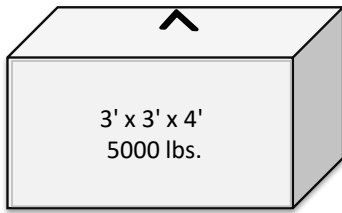


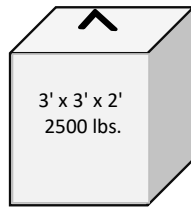
# GRAVES CONCRETE

Blocks are made with returned concrete



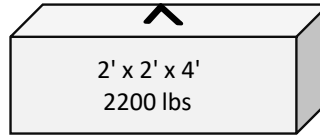
3' x 3' x 4'  
5000 lbs.

\$70.00



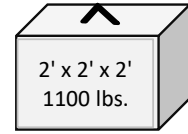
3' x 3' x 2'  
2500 lbs.

\$60.00



2' x 2' x 4'  
2200 lbs

\$65.00



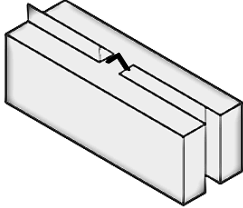
2' x 2' x 2'  
1100 lbs.

\$60.00

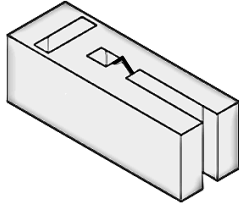
## UnFaced V-Groove Blocks

Blocks are made with returned concrete

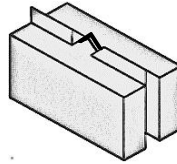
Ask about discounted block seconds



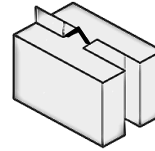
2' x 2' x 6'  
3300 lb.  
\$80.00



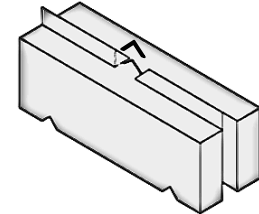
2' x 2' x 5'  
2600 lbs.  
\$80.00



2' x 2' x 4'  
2200 lbs.  
\$75.00



2' x 2' x 2'  
2' x 2' x 3'  
1700 lbs.  
\$60.00 & 70.00

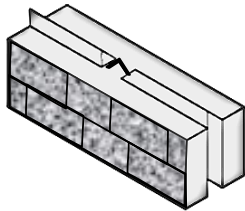


2' x 2' x 6' corner  
3300 lbs.  
\$90.00

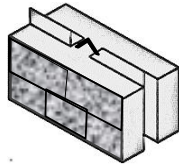
## Faced V-Groove Blocks

Blocks are made with returned concrete

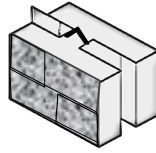
Ask about discounted block seconds



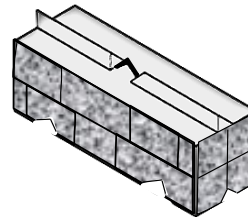
2' x 2' x 6'  
3200 lb.  
\$100.00



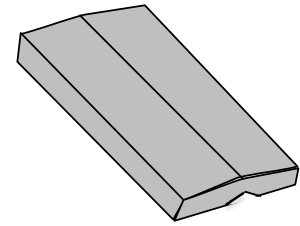
2' x 2' x 4'  
2200 lbs.  
\$95.00



2' x 2' x 2'  
2' x 2' x 3'  
1600 lbs.  
\$80.00 & \$90.00



2' x 2' x 6' corner  
3200 lbs.  
\$110.00



26" x 6" x 6' Cap  
1000 lbs.  
\$110.00  
4000 psi

Retaining Wall Blocks  
16" High x 48" Long



Made with 4000psi  
Concrete

24" Deep Block \$115.00  
39" Deep Block \$145.00  
45" Deep Block \$155.00  
60" Deep Block \$200.00  
72" Deep Block \$225.00



Top Block \$100.00  
Corner Block \$115.00  
24" Half Blocks \$90.00  
Cap Stone \$100.00  
Step \$100.00

Call For Delivery Pricing

Graves Concrete  
P.O. Box 680 E. Templeton, MA.01438 978-939-5712 ext. 3

2026