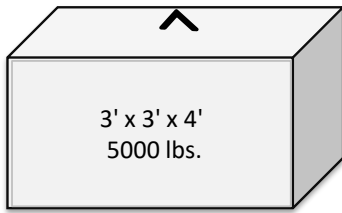


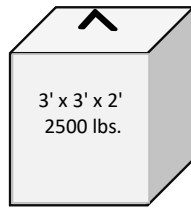
# GRAVES CONCRETE

Blocks are made with returned concrete



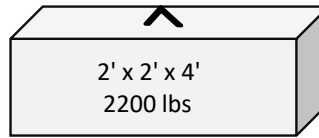
3' x 3' x 4'  
5000 lbs.

**\$70.00**



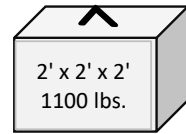
3' x 3' x 2'  
2500 lbs.

**\$60.00**



2' x 2' x 4'  
2200 lbs

**\$65.00**



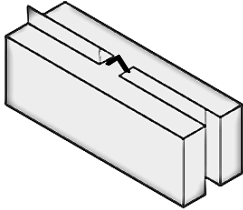
2' x 2' x 2'  
1100 lbs.

**\$60.00**

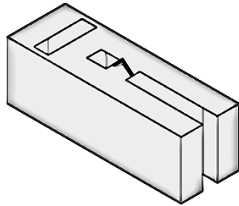
## UnFaced V-Groove Blocks

Blocks are made with returned concrete

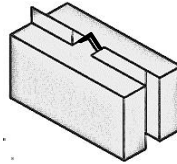
Ask about discounted block seconds



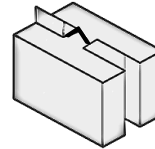
2' x 2' x 6'  
3300 lb.  
**\$80.00**



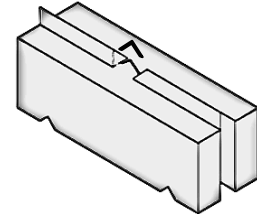
2' x 2' x 5'  
2600 lbs.  
**\$80.00**



2' x 2' x 4'  
2200 lbs.  
**\$75.00**



2' x 2' x 2'  
2' x 2' x 3'  
1700 lbs.  
**\$60.00 & 70.00**

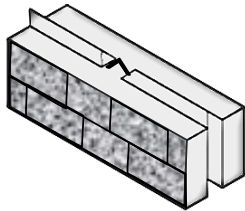


2' x 2' x 6' corner  
3300 lbs.  
**\$90.00**

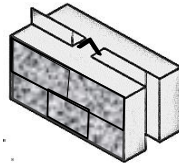
## Faced V-Groove Blocks

Blocks are made with returned concrete

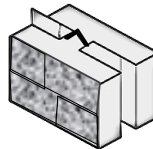
Ask about discounted block seconds



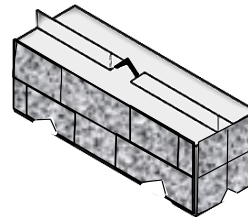
2' x 2' x 6'  
3200 lb.  
**\$100.00**



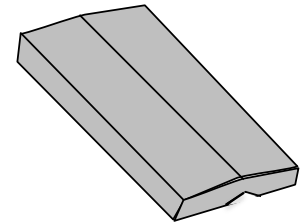
2' x 2' x 4'  
2200 lbs.  
**\$95.00**



2' x 2' x 2'  
2' x 2' x 3'  
1600 lbs.  
**\$80.00 & \$90.00**



2' x 2' x 6' corner  
3200 lbs.  
**\$110.00**



26" x 6" x 6' Cap  
1000 lbs.  
**\$110.00**  
4000 psi

Retaining Wall Blocks  
16" High x 48" Long



Made with 4000psi  
Concrete



24" Deep Block \$110.00  
39" Deep Block \$137.00  
45" Deep Block \$147.00  
60" Deep Block \$190.00  
72" Deep Block \$215.00

Top Block \$95.00  
Corner Block \$110.00  
24" Half Block \$85.00  
Cap Stone \$95.00  
Step \$95.00

Call For Delivery Pricing

Graves Concrete  
P.O. Box 680 E. Templeton, MA.01438 978-939-5712 ext. 3

**2025**